

Wnt16 Antibody
Rabbit mAb
Catalog # AP92892**Specification**

Wnt16 Antibody - Product Information

Application	WB
Primary Accession	Q9UBV4
Reactivity	Rat
Clonality	Monoclonal
Other Names	
WNT16;	
Isotype	Rabbit IgG
Host	Rabbit
Calculated MW	40690 Da

Wnt16 Antibody - Additional Information

Dilution	WB~~1:1000
Purification	Affinity-chromatography
Immunogen	A synthesized peptide derived from human Wnt16
Description	Ligand for members of the frizzled family of seven transmembrane receptors. Probable developmental protein. May be a signaling molecule which affects the development of discrete regions of tissues. Is likely to signal over only few cell diameters.
Storage Condition and Buffer	Rabbit IgG in phosphate buffered saline , pH 7.4, 150mM NaCl, 0.02% sodium azide and 50% glycerol. Store at +4°C short term. Store at -20°C long term. Avoid freeze / thaw cycle.

Wnt16 Antibody - Protein Information**Name** WNT16**Function**

Ligand for members of the frizzled family of seven transmembrane receptors. Probable developmental protein. May be a signaling molecule which affects the development of discrete regions of tissues. Is likely to signal over only few cell diameters (By similarity).

Cellular Location

Secreted, extracellular space, extracellular matrix

Tissue Location

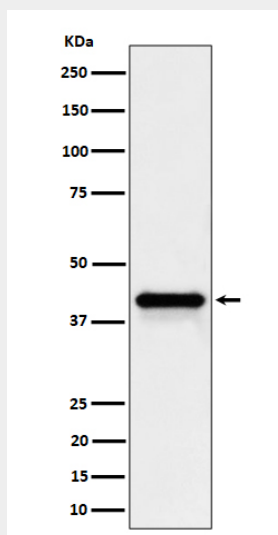
Isoform Wnt-16b is expressed in peripheral lymphoid organs such as spleen, appendix, and lymph nodes, in kidney but not in bone marrow. Isoform Wnt-16a is expressed at significant levels only in the pancreas

Wnt16 Antibody - Protocols

Provided below are standard protocols that you may find useful for product applications.

- [Western Blot](#)
- [Blocking Peptides](#)
- [Dot Blot](#)
- [Immunohistochemistry](#)
- [Immunofluorescence](#)
- [Immunoprecipitation](#)
- [Flow Cytometry](#)
- [Cell Culture](#)

Wnt16 Antibody - Images



Western blot analysis of Wnt16 expression in HepG2 cell lysate.